

# Kohler® Diesel

## Model KD625-3

3 Cylinders » 1870 cc » 27.5 kW/36.9 HP » 3000 RPM » 55.3 ft. lbs. @2000 RPM

### Certification

EPA Interim TIER 4 ■

97/68/CE ●

ECE R 24-03 ▲

### Features

- 4-Stroke Air-Cooled Diesel Engine
- Direct Injection
- Belt-Driven Blower
- Mechanical Fuel Pump
- Full-Pressure Lubrication with Gear Pump
- Full Flow Oil Filter
- Automatic Extra Fuel Starting Device
- Variable Speed Governor
- Aluminium Crankcase
- 12 V Electric Starter
- Counter-Clockwise Rotation (From PTO Side)
- Aluminum Alloy Independent Heads
- Re-Borable Independent Cast-Iron Cylinders
- Power Take-Off on Flywheel
- Oil Cooler

### Applications

- Power Buggy
- Vibrating Roller
- Generator
- Welder
- High-Pressure Cleaner
- Hydraulic Power Pack
- Agricultural Pump
- Two-Wheel Tractor

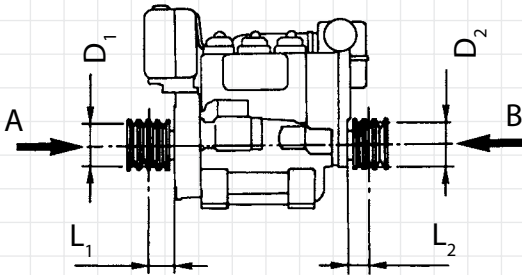


# Kohler® Diesel Model KD625-3

## Specifications

Cylinders	No. of Cylinders	3
Displacement	cc/cu. in.	1870/114.1
Bore	mm/in.	95/3.7
Stroke	mm/in.	88/3.5
Compression Ratio		17:1
Rating kW/HP	N (80/1269/CEE) ISO 1585	27.5/36.9
	NB ISO 3046 IFN	25.4/34.1
	NA ISO 3046 ICXN	24/32.2
Max. Torque	N·m/ft. lbs. @ 2000 RPM	115/84.8
Max. Torque 3 P.T.O.		
Counterclockwise Rotation	N·m/ft. lbs.	39/28.8
Engine Speed - 3 P.T.O. Ratio		1:1.06
Minimum Idling Speed R.P.M.		800-900
Fuel Tank Capacity	liters/quarts	15/15.9
Oil Consumption	kg/h/lb/h	0.017/0.037
Oil Capacity	liters/quarts	5/5.3
Min. Allowable Oil Pressure	bar/psi	1.5/21.8
Max. Allowable Angle of Operation (Peak Values)		25° (35°)
Volume of Air Required for Correct Combustion @ 3000 R.P.M.	liters/min/cfm	2400/85
Volume of Air Required for Correct Cooling @ 3000 R.P.M.	liters/min/cfm	38000/1342
Dry Weight	kg	170/374.8
Recommended Battery	V/Ah	12/66
Axial Load	(continuous) kg/lbf	300/661
	(intermittent) kg/lbf	600/1323

### Minimum Pulley Diameters for Belt Drive



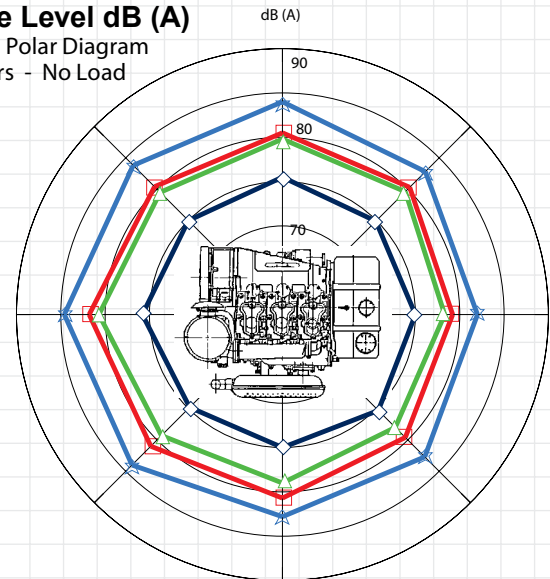
$$D_1 \text{ (mm)} \geq 100 \left[ \frac{185 + L_1 \text{ (mm)}}{n \text{ (RPM)}} \right] \frac{N \text{ (kW)}}{n \text{ (RPM)}}$$

$$D_2 \text{ (mm)} \geq 110 \left[ \frac{169 + L_2 \text{ (mm)}}{n \text{ (RPM)}} \right] \frac{N \text{ (kW)}}{n \text{ (RPM)}}$$

Max. allowable axial load in both directions A-B = 600 kg/1323 lb<sub>f</sub>

### Sound Pressure Level dB (A)

Sound Pressure Level Polar Diagram  
Open Field at 7 Meters - No Load  
Running Engine.

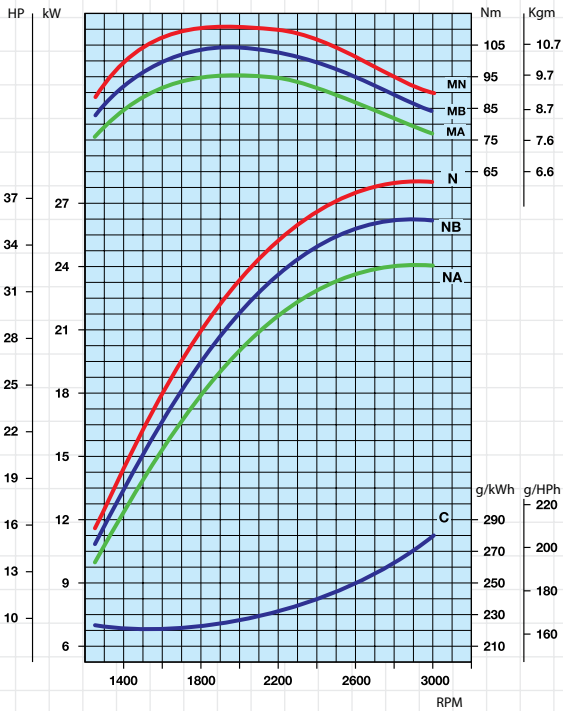


1500 RPM 2000 RPM 2500 RPM 3000 RPM

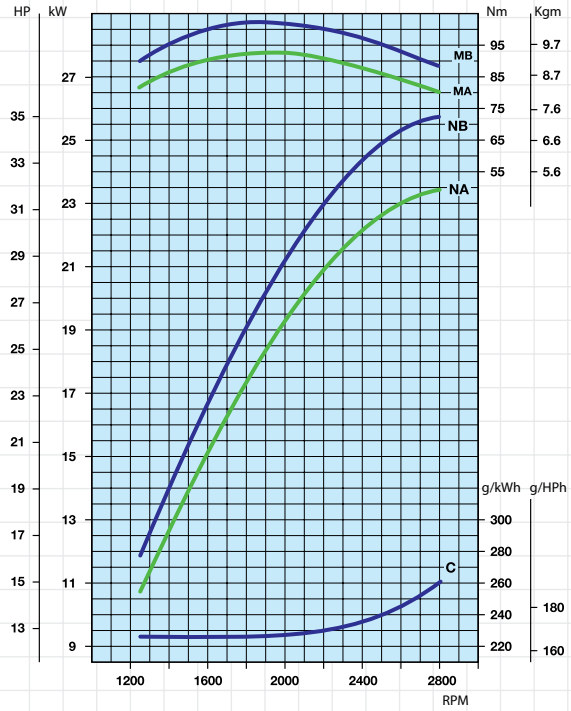
# Kohler® Diesel Model KD625-3

## Curves

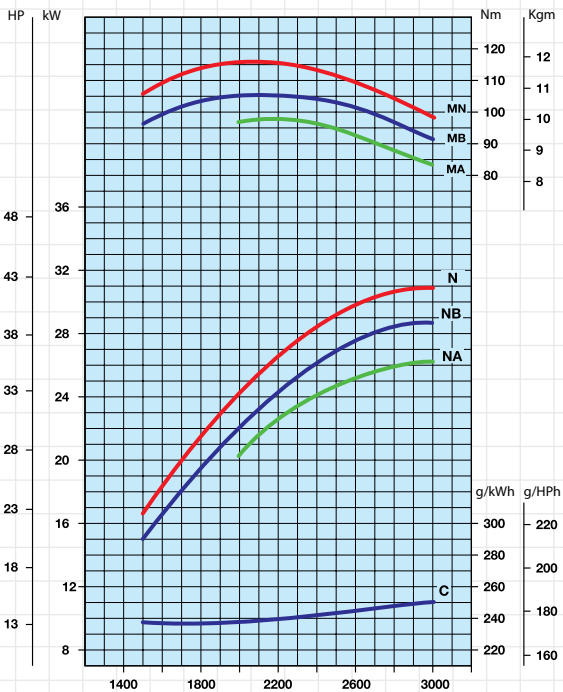
KD625-3 NR @ 3000 RPM



KD625-3 B2 NR @ 2800 RPM



KD625-3 @ 3000 RPM



- N Power Curve - 80/1269/CEE - ISO 1585 -
- NB Power Curve - ISO 3046/1 - IFN -
- NA Power Curve - ISO 3046/1 - ICXN -
- MN Torque Curve - (N curve)
- MB (B Curve - MA (A curve)
- C Specific Fuel Consumption - (NB curve)

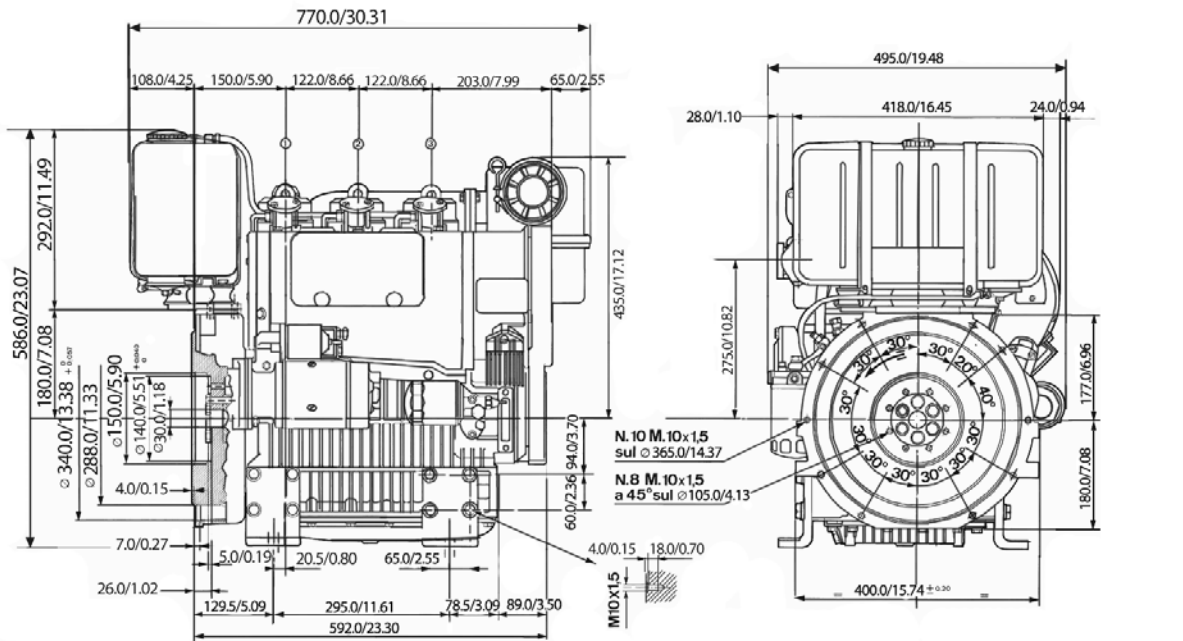
Output Power for Fixed Speed  
Application (Including Generator Sets)

Engine Power kW

RPM	Intermittent (NB)	Continuous (NA)
3000	26.3	24.0
1800	20.0	18.0
1500	16.7	14.7

# Kohler® Diesel Model KD625-3

## Technical Drawings



## Standard Equipment

- 12 V Electric Start and Alternator
- Manual Throttle Control (Fixed)
- Oil Bath Air Filter w/Pre-cleaner
- External Fuel Filter
- External Oil Filter
- Oil Pressure Switch
- Exhaust Manifold and Muffler
- Engine Feet
- Power Take-Off on Flywheel
- Keyswitch Panel
- Fuel Lift Pump
- Counter-Clockwise Rotation on Power Take-Off Side
- Automatic Extra Fuel Device
- Oil Cooler
- Sound-Proofing
- Guard for Belt
- Group 5 Interchange Housing
- Flat Face Flywheel

## Accessories

- Different Guards According to Use
- Flanges
- Remote Air Filter
- Range of Flywheels for Various Clutches
- Hydraulic Pump Adapters
- 15 L Fuel Tank
- Cable-Operated Throttle and Stop Controls (Cable Not Supplied)
- Extended Wiring Harness
- Glow Plug in Intake Manifold
- Cylinder Head Temperature Sensor
- Various Shaft Extensions
- Various SAE Housings and Flywheels
- Outboard Bearing Support

